



& Goldstar



Alexis, Brad, Ella, Landon

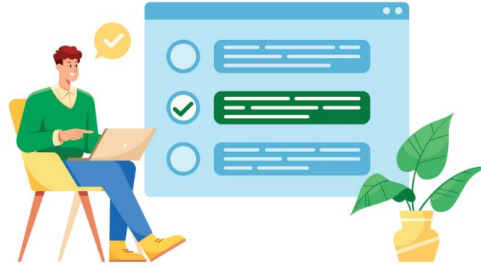
Agenda

1. What we Heard
2. What's Happening in the Industry
3. Tools and Insights
4. What Others are Saying
5. Next Steps & Discussion

What We Heard



Time

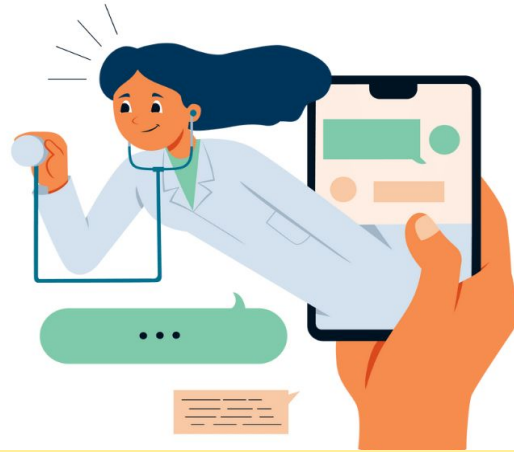


Accuracy



**Security &
Integration**

What's happening in the industry:



**Communication &
Monitoring**

What's happening in the industry:

24%

of patients fully adhere
to care plans

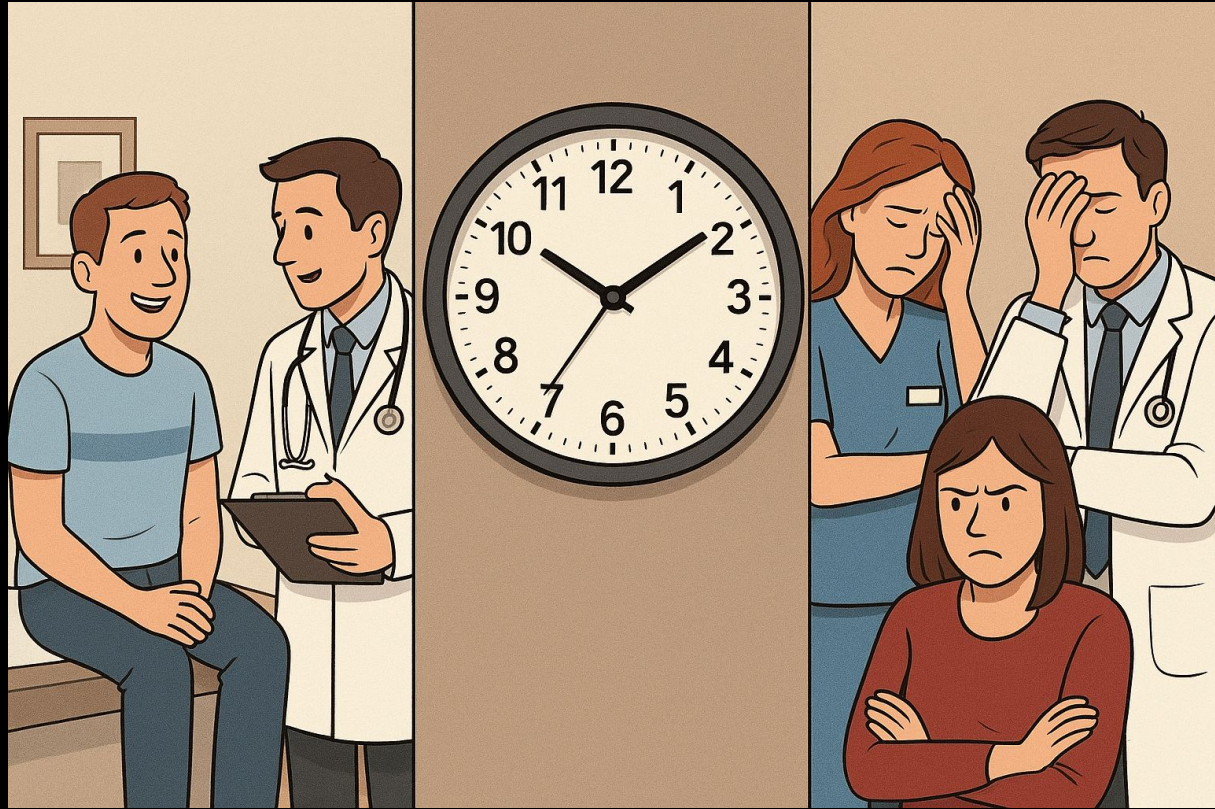
76%

of patients **DO NOT**
adhere to care plans

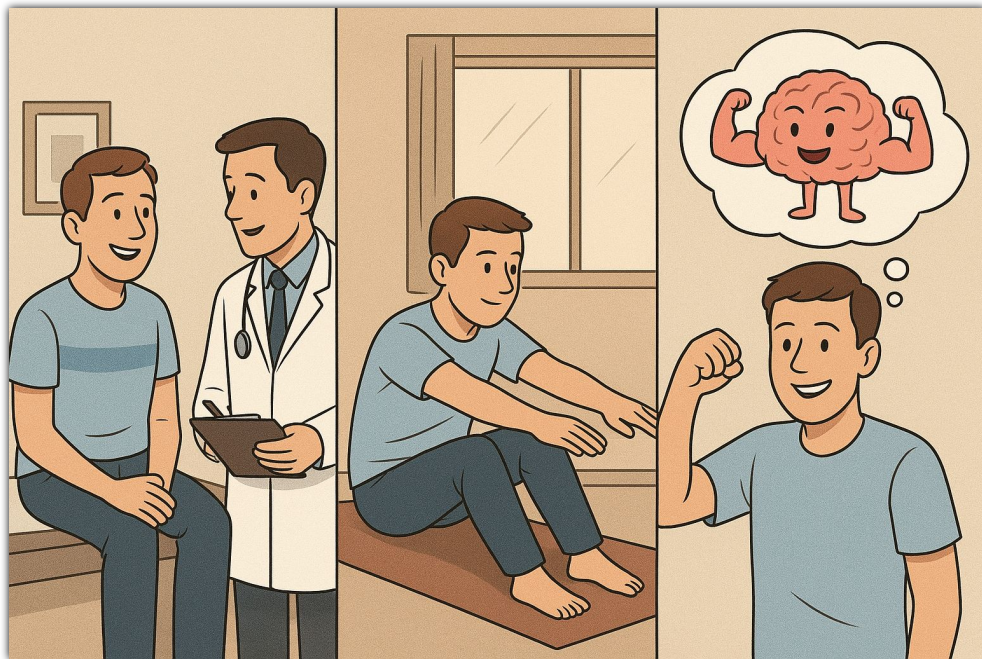


When Care Gets Stuck in the System

When testing feels like a burden, care begins to break down.



Turning Testing Into Continuous Care



The new standard of cognitive care should:

- **Save time** for the patient and the staff sacrificing
- **Maintain accuracy** of results
- **Be Secure** and reduce IT friction
- **Integrate naturally** into existing workflows
- **Clear Communication & Monitoring** from screening to follow-up support

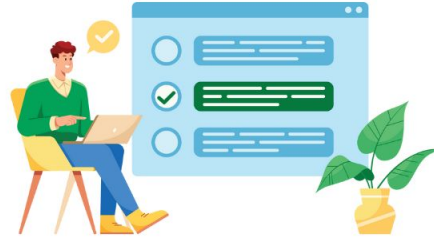
Connected, efficient, and built for real life.

Tools & Insights

✱ BrainCheck



Time

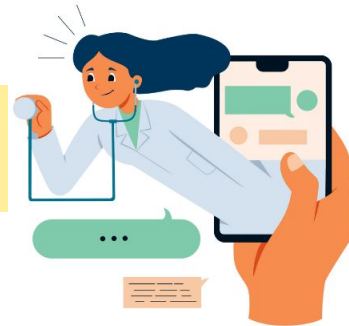


Accuracy



Security & Integration

Communication & Monitoring





BrainCheck

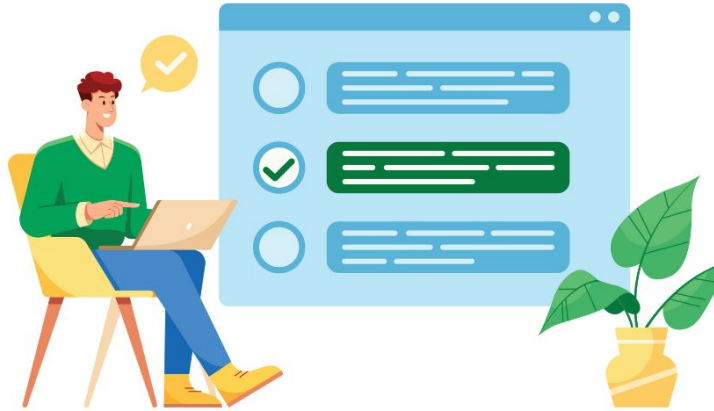
Saves Time



- **Automated** scoring & data analysis
- Screening, Assessment, & Care Plan **takes less than an hour to complete**
- **EHR Integration**

BrainCheck

Is Accurate



- **FDA Class II medical device** with accuracy on par with traditional screening tools
- **Validated and tested** in clinical settings
- **Normative Comparison & Analytics**



BrainCheck

Is Secure & Easy



- **Fully encrypted**; meets SOC 2, HIPAA, and GDPR standards.
- **Only accessible by authorized users** with patient consent.
- **Safely connects** with Athena, Epic, and other EHR systems.

✿ BrainCheck

**Communicates
& Monitors**



- **In-office or remote assessments**
- Accessible from **any device, anywhere.**
- Easily **download and share plans**
- **Proactive monitoring** that tracks changes over time

What Others are Saying



“When BrainCheck introduced remote testing, it was a real game changer.”

BRUCE LOWELL, MD
GERIATRICIAN, NEW YORK HOSPITAL QUEENS, NORTH SHORE HOSPITAL MANHASSET



“We looked at other digital cognitive assessments but found BrainCheck to be the most clinically-proven, cost-effective, and convenient.”

PHILLIP CEZAYIRLI, MD
NEUROSURGEON, HAYNES NEUROSURGICAL GROUP

Next
Steps

